

DocuCentre-IV

3065

3060

2060

FUJI xerox 

DocuCentre-IV 3065 / 3060 / 2060

Digital Black and White Multifunction Device

Productivity, flexibility and simplicity



Redefining workgroup productivity

Whether your workgroup needs exceptional copier performance or the added power of printing, scanning and faxing, the DocuCentre-IV 3065 / 3060 / 2060 series is all about productivity.

A host of time-saving features boost your team's efficiency, and advanced workflow solutions streamline the tasks you perform every day. These modular and easy-to-manage devices are packed with high-end features to deliver a level of productivity above and beyond your typical office multifunction devices.

Features at a glance

- A robust copier and printer with optional scanning and faxing capabilities to optimise your workgroup's productivity
- Print and copy speeds of up to 35 ppm and a scan speed of up to 55 ipm to keep up with your busy pace
- Easy-to-use, colour user interface
- Powerful scan and fax solutions
- Compact and versatile finishing capabilities
- Sophisticated security tools – built-in support for SNMPv3, print and scan encryption and image overwrite



DocuCentre-IV 2060 with optional Wing Table,
High Capacity Tandem Trays and Booklet Finisher

Smaller overall footprint. Thoughtful engineering delivers more functionality while taking up less space. The compact new imaging system lets you add the integrated finisher for convenient single-position stapling.

110-sheet Duplex Automatic Document Feeder (DADF) quickly processes single or double-sided originals.

Easily open, close and replenish paper trays with the improved, simple design. When the handle is held, the latch is automatically lifted and the tray is unlocked.

Finishing flexibility. Create professional presentations and attractive manuals or proposals with the choice of two finishing options which feature automatic stapling, hole-punching, folding and booklet making.

7-inch, colour user interface features bright, intuitive icons and easy access to all major functions directly from the home screen. For easy document viewing, colour thumbnails and up-close previews can be shown on the device touch screen.

Configuration options



1
Optional
Wing Table

2
Optional Stand

3
Four 500-sheet
paper trays
adjustable up to A3

4
Optional integrated
stapler finisher

5
2,000-sheet
A4 High Capacity
Feeder (optional)
can increase total
capacity to 5,050
sheets

6
High Capacity
Tandem Tray holds
up to 3,000 sheets

7
Choose basic features
like staple and hole
punch (optional), or
advanced capabilities
to produce saddle-
stitched booklets
(unfolded)

Increase office efficiency

DocuCentre-IV 3065 / 3060 / 2060 series multifunction devices have the power you need along with the work-saving features to help you get more done, in less time and with less effort.

A robust copier that can handle your workgroup's volumes, and offers convenient features including ID card copy, annotation and multiple-up copying.

Experience high output performance with print and copy speeds of up to 35 ppm in simplex and duplex.

With ultra-fast, 55 ipm colour scanning, users can take advantage of all the benefits of scanning while maintaining the original look and feel of full colour documents.

Scan to Email lets you route files to email recipients directly from the front panel. With LDAP integration, access to your corporate directory is simplified.

Network scanning uses convenient templates to send scans to predefined locations.

Scan to folder lets you send electronic files to the device's hard drive for easy retrieval.

Job flow sheets simplify everyday workflows by automatically routing documents to predefined locations, including preset email addresses, fax destinations and FTP/SMB sites.

Compression technology creates smaller scan files for faster delivery and reduced network load*.

*Optional High Compression Image kit is required



1
One-touch buttons (fax model)

2
USB memory slot (optional)

3
Menu button
Registration button

4
7" colour user interface

5
Authentication button

6
Status display LEDs

Walk-up simplicity. Print from and scan to any USB memory device for faster document delivery when you're not at your computer*.



*Optional Scan to USB Kit and/or USB Media Print Kit is required



7

Power-saving button

8

Main power LED

Conservation built-in

Get a powerful multifunction device that is built with the environment in mind.

Power save with **quick start-up** conserves electricity during downtime while keeping the device ready for action.

Upgrade for energy efficiency. DocuCentre-IV 3065 / 3060 / 2060 series deliver more savings by cutting energy consumption during use compared to older models. They meet the latest ENERGY STAR® qualifications, and reduce energy required to copy, print, fax and scan by combining the functions of multiple products into one.

Automatic paper-saving print settings allow for reduced impact on the environment. Options include default two-sided printing, proof print, recycled paper and draft mode.

Simplicity in design

With fast deployment and easy support, the DocuCentre-IV 3065 / 3060 / 2060 series is ready to deliver the performance you need, when you need it. Helpful tools make it easy to maintain complete control — allowing you to keep costs to a minimum.

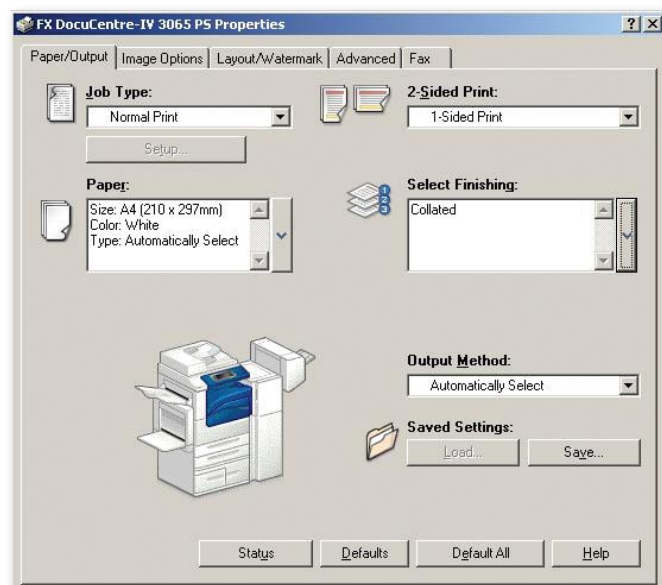
Powerful scanning tools let you back up critical documents, converting them into searchable digital files* for easy sharing and archiving while reducing the amount of physical storage space required.

*Optional Searchable PDF Kit is required

Introduce new workflows or automate repetitive processes within the office environment by automatically routing documents to predefined locations at the touch of a button.

To speed up copying and faxing an express (simple) copy and fax feature is available that displays only the basic settings. This is provided in addition to the normal features.

WHQL certified PCL and PostScript print drivers provide a consistent, easy-to-use interface for end-users that can greatly simplify your printing operations.



A truly universal print driver. Xerox Global Print Driver® lets IT administrators install, upgrade and manage Fuji Xerox and non- Fuji Xerox devices from a single driver. It provides a consistent, easy-to-use interface for end-users, reducing the number of support calls, and simplifying print services management.

Customise your print driver settings for economy and efficiency. For example, set two-sided printing or choose N-up for printing multiple pages on a single sheet as your default.

Save time by storing the settings of frequently printed documents as favourites in your print driver. Settings include paper sizes, covers, duplexing, finishing and more.

Advanced, paperless faxing. Users can send and receive faxes without leaving their desks. LAN fax sends faxes directly from a PC. Plus, fax-forwarding lets you forward incoming faxes to an email address, folder or network connected PC for retrieval and further distribution on demand.

Fax notifications. This feature will notify nominated users by email when an incoming fax has been received. Users can also choose to receive an email notification when faxes have been successfully transmitted.

Block unwanted (junk) fax numbers. This allows you to block specified fax numbers, so it won't print faxes received from those numbers in the future.

Reporting and management tools

Cost control features include an internal Auditor, which lets administrators set limits for print, copy, fax and scan functions by user.

CentreWare Internet Services simplifies installation and network administration, providing quick access to device status. Network administrators can easily configure the device, upload address books and monitor usage and consumables remotely.



Driverless printing for remote users with CentreWare Internet Services web utility. Any connected computer can immediately output PDF, TIFF and PRN files from any network computer, without using a print driver at all.

Device Setup Tool allows for simplified device configuration and administration, and lets you easily clone configurations to other similar devices on the network.



Security at every level

Secure Print helps prevent unauthorised viewers from seeing documents by holding jobs in the print queue until the user is authenticated.

Image Overwrite security feature clears or “overwrites” all trace of any document image data remaining on the hard drive after a print, copy, scan or fax job (when enabled).

Hard disk encryption helps ensure that unauthorised users can't access stored documents.

IPv6 support includes full enablement of the new IPSec standard.

An internal firewall provides an additional measure of security, providing IP filtering, domain filtering and port blocking.

Network authentication restricts access to scan, email and network fax features by validating user names and passwords before use. Audit Log capabilities let you know who sent what, when.

Specifications of DocuCentre-IV 3065 / 3060 / 2060 Series

Copy Function

	DocuCentre-IV 3065	DocuCentre-IV 3060	DocuCentre-IV 2060
Type	Console type		
Memory	System Memory: 1 GB / Page Memory: 512 MB		
HDD	160 GB (Usable Space: 40 GB)		
Scanning Resolution	600 x 600 dpi		
Warm-up Time	DC model: 14 sec or less / CP & CF model: 23 sec or less		
Original Paper Size	Max: 297 x 432 mm (A3, 11 x 17") for both sheet and book originals		
Output Paper Size	Max: A3 (297 x 420mm), 11x17" (279 x 431.8mm), Non-standard size: 297 x 431.8mm Min: A5 (148 x 210mm), Non-standard size: 139.7 x 182mm, Bypass Tray: 88.9 x 98.4mm		
Output Paper Weight ¹	Tray 1: 60 - 105 gsm, Trays 2 - 4: 60 - 215 gsm, Bypass Tray: 60 - 215 gsm		
First Copy Output Time	35ppm: 4 sec or less 30/25ppm: 4.2 sec or less		
Continuous Copy Speed (In Simplex and Duplex)	35 ppm	30 ppm	25 ppm
Paper Tray Capacity	Standard: Tray 1 & 2: 500 sheets, Bypass Tray: 50 sheets Optional: Two Tray Module (Tray 3 & 4): 500 sheets, Tandem Tray Module: 900 sheets + 1,100 sheets, HCF B1: 2,000 sheets Maximum: 4,050 sheets (with Two Tray Module and High Capacity Feeder B1) or 5,050 sheets (with Tandem Tray Module and High Capacity Feeder B1)		
Output Tray Capacity	500 sheets		
Power Supply	AC 220 - 240 V, 8 A, 50/60 Hz		
Power Consumption	Maximum power consumption: 1,920W (240V AC) Sleep mode: 2W (240V AC)		
Dimensions	W 596 x D 640 x H 1,114.5 mm		
Machine Weight	65.1 kg		

¹ Performance may vary for heavyweight, coated and special stocks.

Print Function

Type	Built-in type		
Continuous Print Speed (In Simplex and Duplex)	35 ppm	30 ppm	25 ppm
Print Resolution	Standard: 600 x 600 dpi (Default) / High Resolution: 1,200 x 1,200 dpi		
PDL	Standard: PCL6, PCL5, Optional: Adobe® PostScript® 3™		
Operating System	Standard: Windows® 2000, Windows® XP, Windows Server® 2003/2008, Windows Vista®, Windows® 7, Windows® XP x64, Windows Server® 2003/2008 x64, Windows Vista® x64, Windows® 7 x64, Windows Server® 2008 R2 x64, Mac OS X 10.5/10.6 Optional: Windows® 2000, Windows® XP, Windows Server® 2003/2008, Windows Vista®, Windows® 7, Windows® XP x64, Windows Server® 2003/2008 x64, Windows Vista® x64, Windows® 7 x64, Windows Server® 2008 R2 x64, Mac OS 9.2.2, Mac OS x 10.3.9 10.4.11 (except 10.4.7), Mac OS X 10.5/10.6		
Connectivity	Standard: Ethernet 100BASE-TX/10BASE-T, USB2.0 Optional: 1000BASE-T		

Scan Function (Optional)

Type	Colour Scanner		
Scanning Speed	55 ppm		
Scanning Resolution	600 x 600 dpi, 400 x 400 dpi, 300 x 300 dpi, 200 x 200 dpi		
Connectivity	Standard: Ethernet 100BASE-TX/10BASE-T Optional: Ethernet 1000BASE-T		
Scan Destinations	Scan to Folder, Scan to PC/Server (using FTP/SMB protocol), Scan to E-mail, Scan to USB		

Descriptions in this material, product specifications and / or appearances are subject to change without prior notice due to improvements. Please note that the product colour appears differently from the actual colour as a result of properties of papers or printing ink. Windows and Windows NT are registered trademarks of Microsoft Corporation. NetWare is a registered trademark of Novell, Inc. in the United States. Macintosh, Mac OS and Ether Talk are trademarks of Apple Computer, Inc. PostScript is a registered trademark of Adobe Systems Incorporated in each country. HP-GL is a registered trademark of Hewlett-Packard Company. Other company names or product names are registered trademarks or trademarks of each company.

Spares for the standard configuration of installed machines is supported for up to 7 years from the date of the end of machine production.

For more information or detailed product specifications, call or visit us at

Fuji Xerox Australia 101 Waterloo Road,
Macquarie Park NSW 2113
Tel. (02) 9856 5000 Fax. (02) 9856 5003

13 14 12

<http://www.fujixerox.com.au>

Fax Function (Optional)

Send Document Size	Max: A3, 11 x 17", Long documents (Max: 600 mm)
Transmission Time	Less than 3 seconds
Transmission Mode	G3
No. of Fax Lines	PBX, PSTN, Maximum 3 ports

Duplex Automatic Document Feeder

Capacity	110 sheets
Original Paper Size	Max: A3, 11 x 17", Min: A5
Output Paper Weight	38 - 128 gsm (In Duplex: 50 - 128gsm)
Feeding Speed (A4 LEF Simplex)	BW: 55 ipm, Colour: 55 ipm

Finisher-A1 (Optional)

Paper Size / Paper Weight	Output Tray: A3, 11 x 17", Min: Postcards (100x148mm), 55 - 220g/m2
Stacker Capacity	[Without Staples] A4: 500 Sheets, B4: 250 Sheets, A3 or larger: 200 Sheets, Mixed Size Stacking: 250 Sheets [With Staples] 30 Sets

Staple

Capacity	A4: 50 Sheets (Max 90gsm), B4 or larger: 30 Sheets (Max 90gsm)
Paper Size	Max: A3, 11 x 17", Min: B5 LEF
Position	Single (Front/Angled Staple)

Finisher-B1 (Optional)

Paper Size / Paper Weight	Max: A3, 11 x 17", Min: B5, 55 - 220gsm
Stacker Capacity	[Without Staple] A4: 2,000 Sheets, B4: 1,000 Sheets, Mixed Size Stacking: 300 Sheets, [With Staples] A4: 100 Sets or 1,000 Sheets, B4 or larger: 75 Sets or 750 Sheets Booklet/Fold: 50 Sets or 600 Sheets, Fold: 500 Sheets

Staple

Capacity	50 Sheets (Max 90gsm)
Paper Size	Max: A3, 11 x 17" Min: B5 LEF
Position	Single (Front/Angled Back/Straight), Dual (Parallel)

Punch

Paper Size	A3, 11 x 17", B4, A4, A4LEF, Letter (8.5 x 11"), Letter (8.5 x 11") LEF, B5LEF
Number of Holes	2 / 4 holes or US 2 / 3 holes
Paper Weight	55 to 200 gsm

Booklet Finishing

Capacity	Booklet: 15 sheets, Fold: 5 sheets
Paper Size	Max: A3, 11 x 17", Min: A4, Letter (8.5 x 11")
Paper Weight	Saddle-Stapling: 64 - 80gsm, Half-Folding: 64 - 105gsm

A4 High Capacity Feeder (HCF-B1) Optional

Paper Size / Paper Weight	A4 LEF, Letter (8.5 x 11") LEF, B5 LEF, 60 - 216 gsm
Capacity	2,000 sheets (80gsm)



Reproduction Prohibitions Please note that reproduction of the following is prohibited by law: Domestic and overseas bank notes and coins, government-issued securities, national bonds and local bond certificates. Unused postage stamps and post cards. Certificate stamps stipulated by law. The reproduction of works for copyright purposes (literary works, musical works, paintings, engravings, maps, cinematographic works, photographic works, etc.) is prohibited except when they are reproduced personally, at home or within limited range according to the above. This product is equipped with an anti-counterfeit feature. This feature is not intended to prevent illegal reproduction. Be extremely careful about the management of equipment used.



For Your Safe Use

Before using the product, read the Instruction Manual carefully for proper use.
Use the product with an appropriate adequate power source and voltage displayed. Be sure to establish a ground.
In the case of a failure or short circuit, an electric shock may result.

